



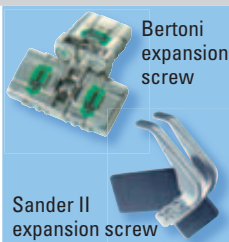
Take advantage of memory technology

Memory Screws for intelligent expansion

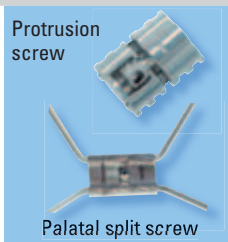
Exclusively from
Forestadent



Mid line expansion screw

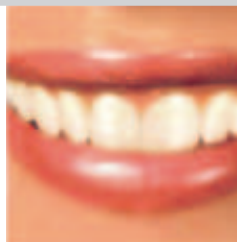


Sander II
expansion screw

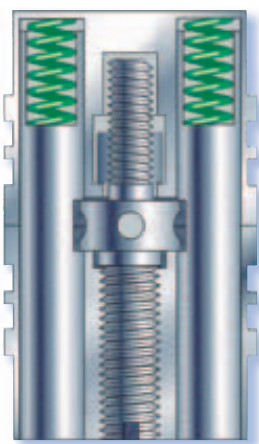


Protrusion
screw

Palatal split screw



Simply unique
Activation of
expansion screws
totally controlled
by clinician



Faster Treatment
Faster expansion
with fewer
re-activations

Intelligent forces
Memory screws use
intelligent springs to
supply continuous
and constant forces

Increased comfort
Physiologically correct
and continuous forces
increase patient comfort



Bernhard Förster GmbH · Westliche Karl-Friedrich-Straße 151 · 75172 Pforzheim · Germany
Phone + 49 7231 459-0 · Fax + 49 7231 459-102 · info@forestadent.com · www.forestadent.com



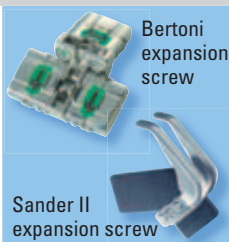
Take advantage of memory technology

Memory Screws for intelligent expansion

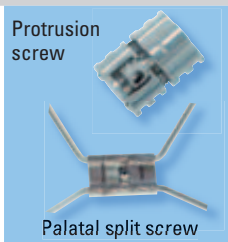
Exclusively from
Forestadent



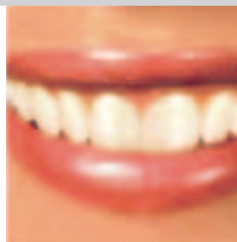
Mid line expansion screw



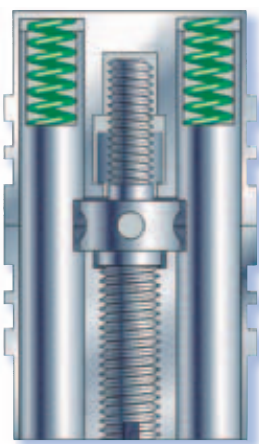
Bertoni expansion screw
Sander II expansion screw



Protrusion screw
Palatal split screw



Simply unique
Activation of expansion screws totally controlled by clinician



Faster Treatment
Faster expansion with fewer re-activations

Intelligent forces
Memory screws use intelligent springs to supply continuous and constant forces

Increased comfort
Physiologically correct and continuous forces increase patient comfort

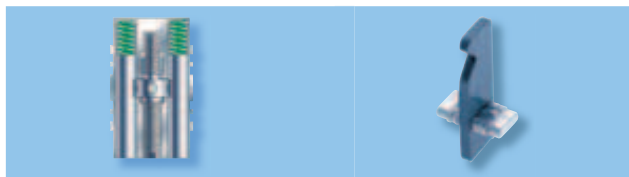


Bernhard Förster GmbH · Westliche Karl-Friedrich-Straße 151 · 75172 Pforzheim · Germany
Phone + 49 7231 459-0 · Fax + 49 7231 459-102 · info@forestadent.com · www.forestadent.com

Forestadent USA · 2301 Weldon Parkway · St. Louis, MO 63146 · TOLL FREE 1-800-721-4940
Fax 314-878-7604 · info@forestadentusa.com · Internet: http://www.forestadentusa.com

Memory Expansion Screws

Exclusively from
Forestadent



Mid line expansion screw

Art. Nr. 100M2015

Memory mid line expansion screw

Memory mid line expansion screw for mandibular and maxillary expansion, second generation.

Spring extension: 0,8 mm / Spring force: 500g

Total expansion: 5 mm



Bertoni expansion screw

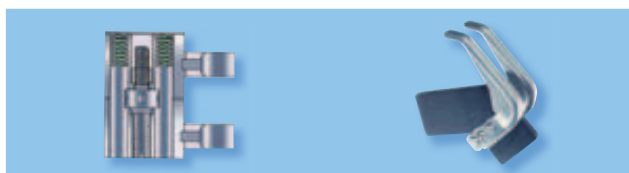
Art. Nr. 165M1413

Memory 3D Bertoni expansion screw

Ideal for simultaneous mid line expansion and protrusion in the maxilla.

Spring extension: 0,8 mm / Spring force: 500g

Total expansion: 3 mm



Sander® II expansion screw

Art. Nr. 169M1343

Sander® II

Memory expansion screw for bite jumping appliance*

The memory Sander II helps to achieve expansion 3 times faster than the conventional model.

Spring extension: 0,8 mm / Spring force: 500g

Total expansion: 5 mm



Sander® II

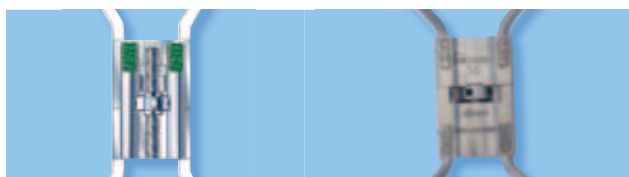
Art. Nr. 100M2016

Sander® II mandibular memory expander

Sander II mandibular memory expander with space maintainer and jig for the design of the sloping planes.

Spring extension: 0,8 mm / Spring force: 500g

Total expansion: 5 mm



Palatal split screw N

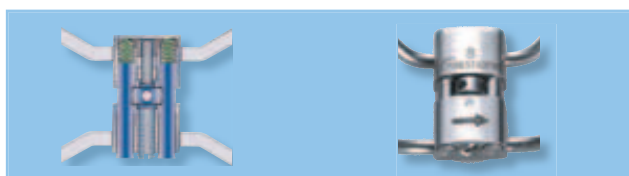
Art. Nr. 167M1529

Memory palatal split screw type N

Memory palatal split screw for faster and more comfortable expansion by using memory technology.

Spring extension: 1 mm / Spring force: 800 g

Total expansion: 10 mm



Palatal split screw S

Art. Nr. 167M1626

Memory palatal split screw type S

More comfortable rapid palatal expansion due to the RPE screw being placed closer to the palate.

Spring extension: 1 mm / Spring force: 500 g

Total expansion: 8 mm



Protrusion screw

Art. Nr. 179M0718

Memory protrusion screw

Memory protrusion screw for individual/single tooth movement.

Spring extension: 0,7 mm / Spring force: 90g

Total expansion: 2,5 mm

* Prof. Dr. F. G. Sander